

SURVEY NO. Mu 88015

WINDOM, MINNESOTA

SIOUX ENGINEERING, INCORPORATED

CERTIFICATE OF LOCATION OF GOVERNMENT CORNER

SOUTH QUARTER Corner of Section 9, Township 107, Range 40, 5TH P.M.

STATE OF MINNESOTA, County of MURRAY

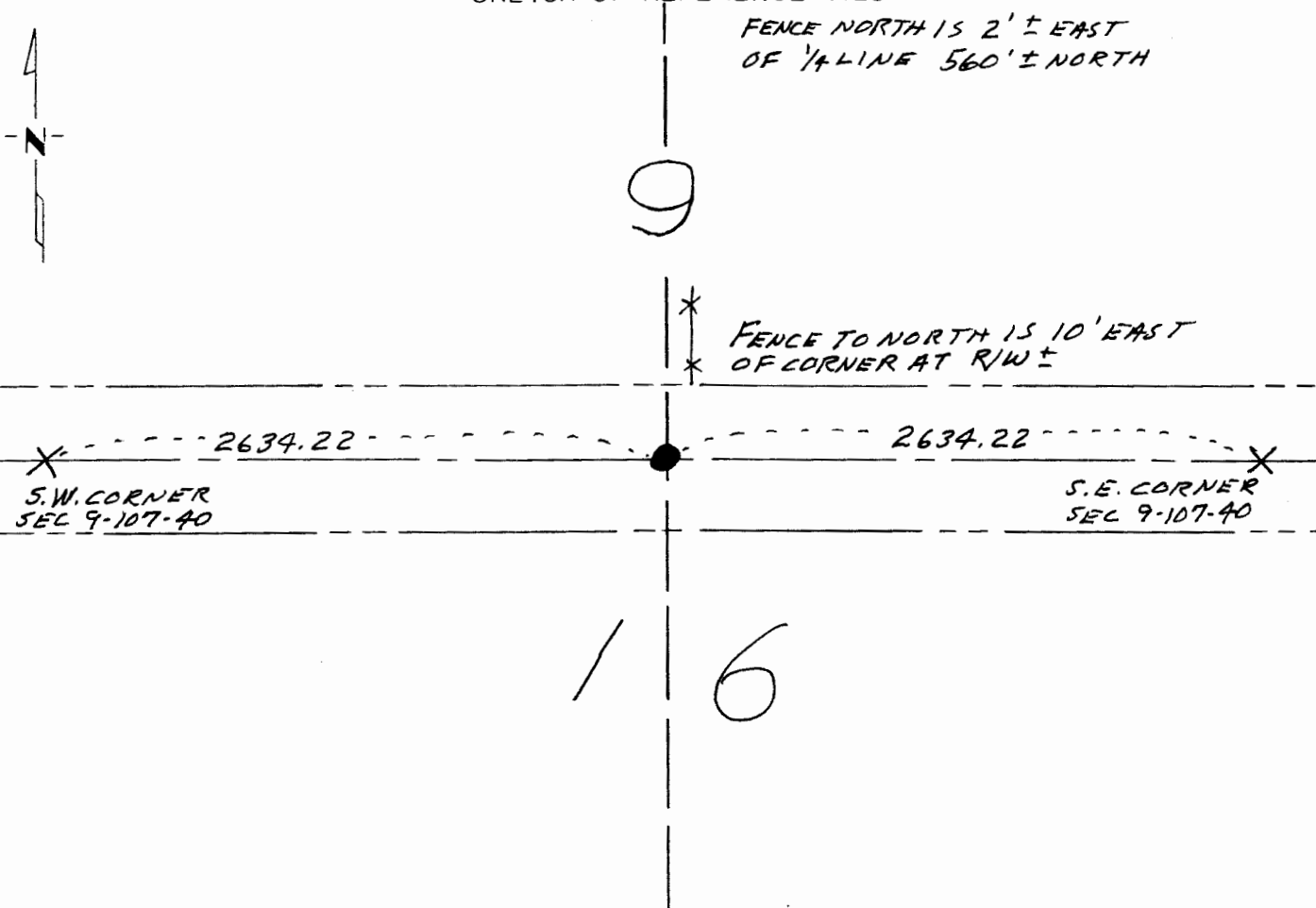
At the corner location shown on the sketch:

On _____ found a _____
DATE

left monument as found, lowered monument, removed monument (explain)

On 9-27-88 placed a PLACED A 5/8" X 30" IRON STAKE WITH SURVEY
DATE CAP PLS 6700 MIDWAY BETWEEN SEC CORNERS PER PLS INSTRUCTION

SKETCH OF REFERENCE TIES



Statement of evidence relative to this corner location is on back of page.

I hereby certify that this document and the data contained herein was prepared by me or under my direct supervision.

C. M. Engquist 10-21-88
SIGNATURE DATE

Registration No. 6700

Land Surveyor, Professional Engineer
 County Surveyor, County Engineer

OFFICE OF THE COUNTY RECORDER
County of _____

I hereby certify that this document was filed in the Co. Recorders office of _____ M. on the _____ day of _____ A.D., 19 _____

County Recorder _____

By _____, Deputy

DOCUMENT NO. _____

Statement of Evidence:

A SEARCH WAS MADE IN THE AREA WITH A BACKHOE. NO EVIDENCE OF MONUMENTATION WAS LOCATED SO IT WAS DETERMINED THE CORNER WAS LOST.

A 78" X 36" IRON STAKE WITH CAST ALUMINUM CAP MARKED "SIDOX ENG RLS 6700" WAS PLACED MIDWAY AND ON LINE BETWEEN THE SOUTHWEST AND SOUTHEAST CORNERS OF THE SECTION AS PER PUBLIC LAND SURVEY INSTRUCTIONS.